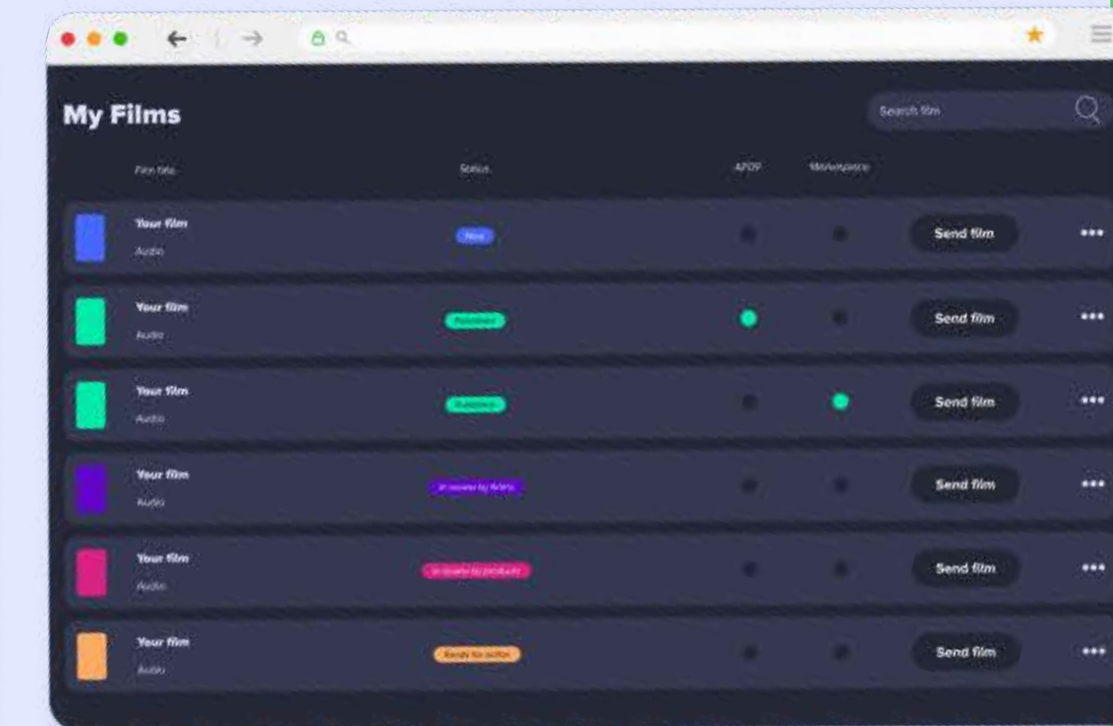
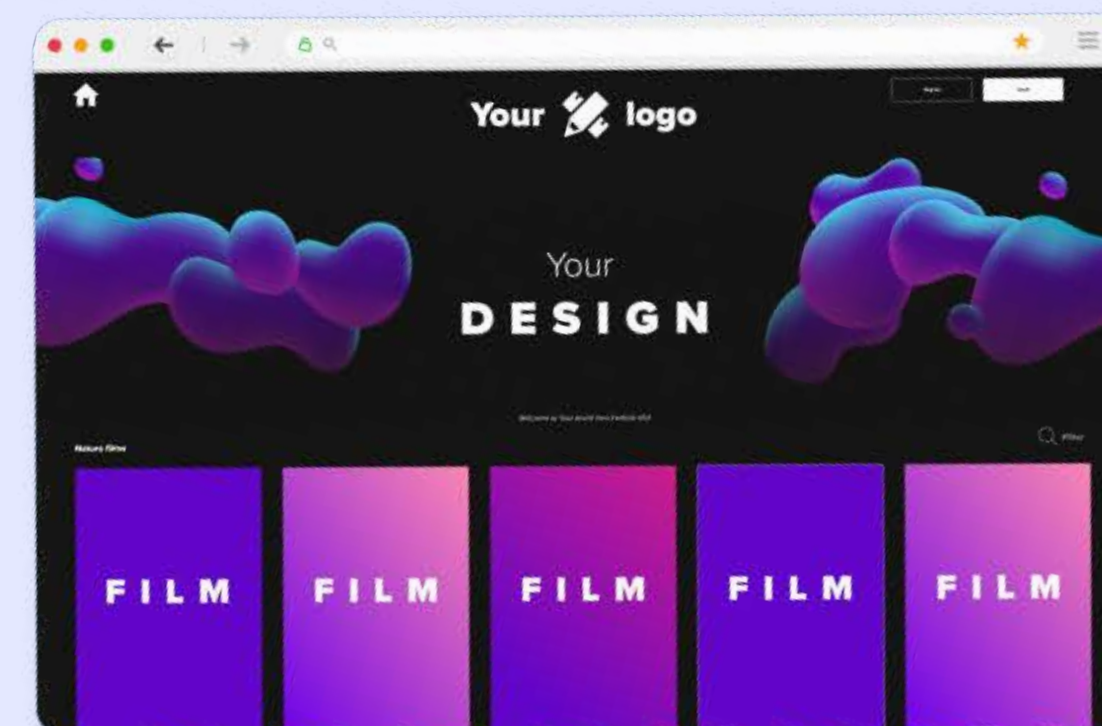
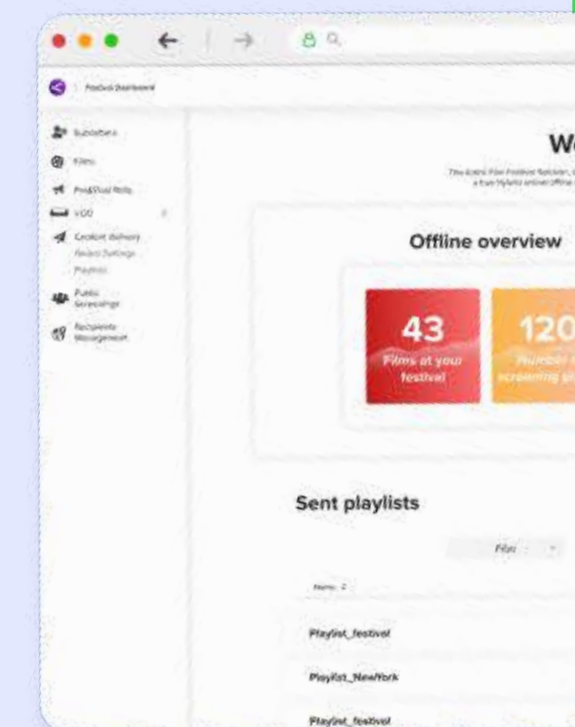
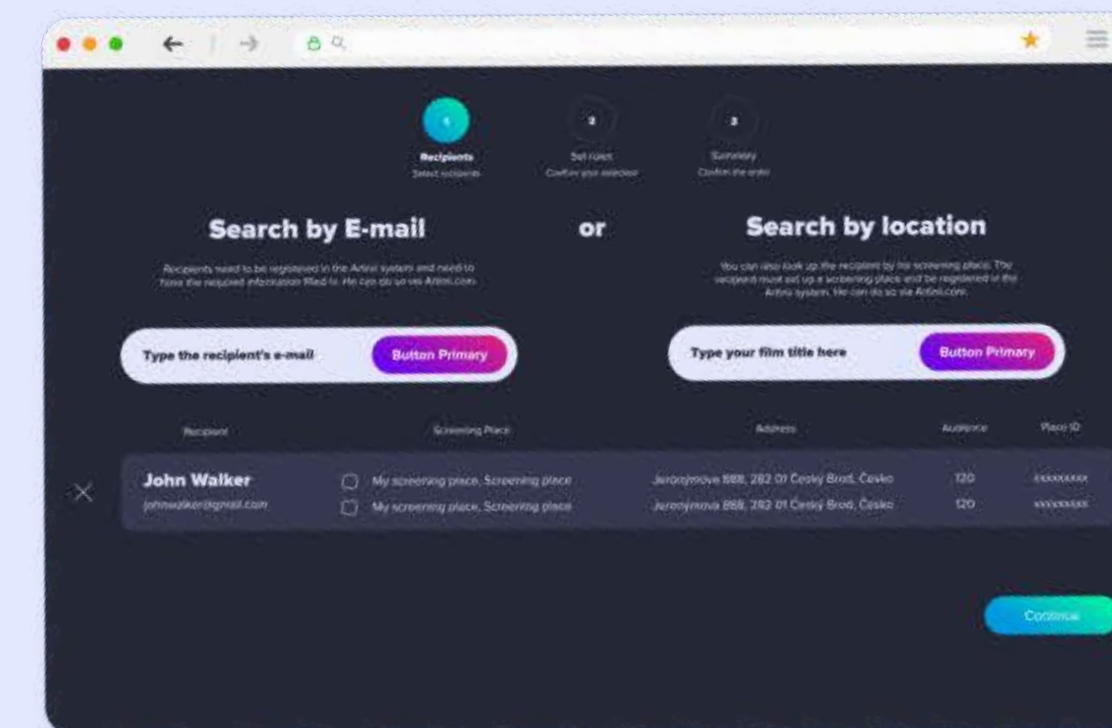
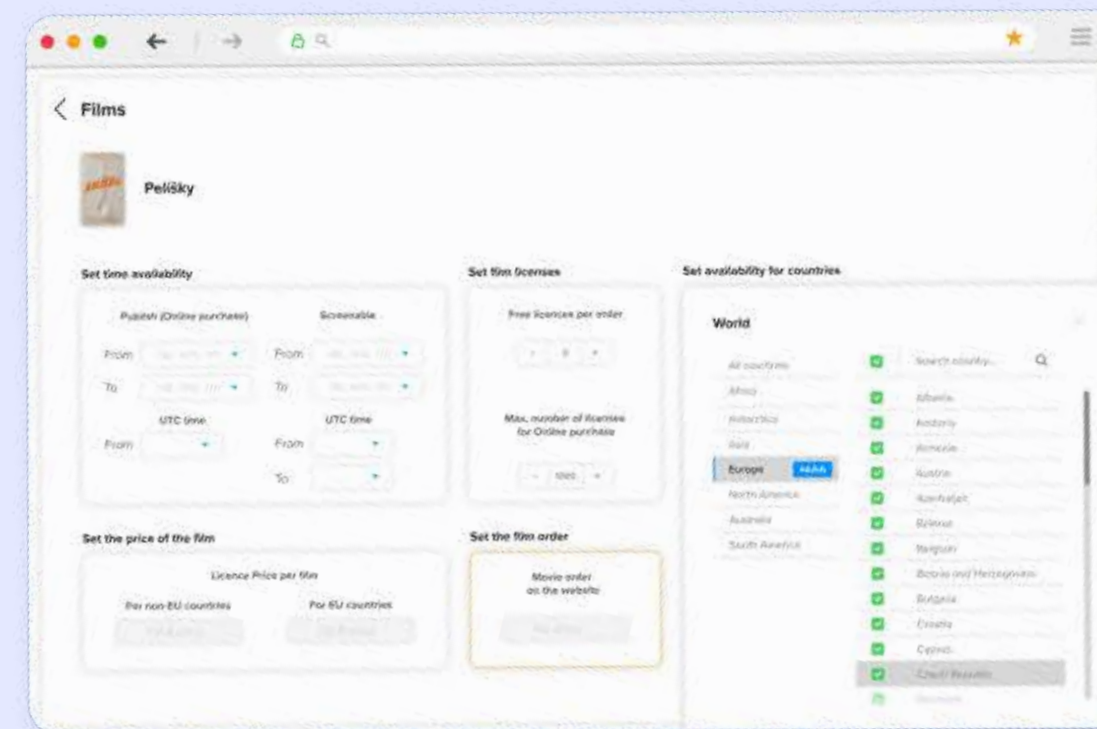
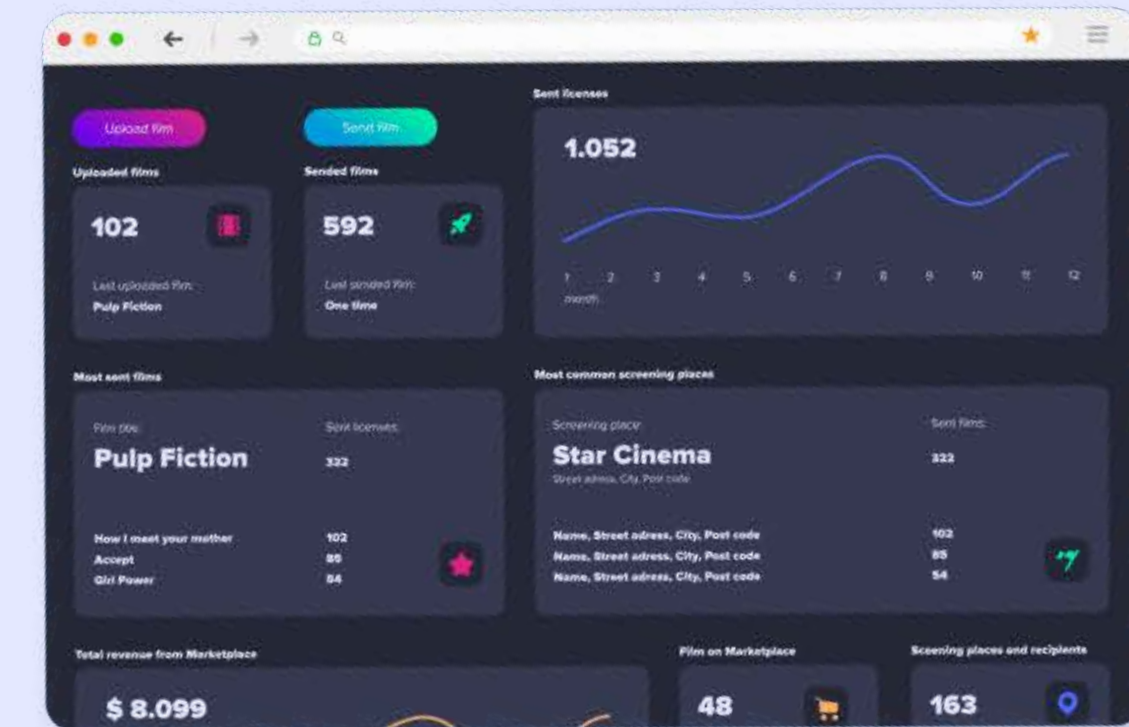
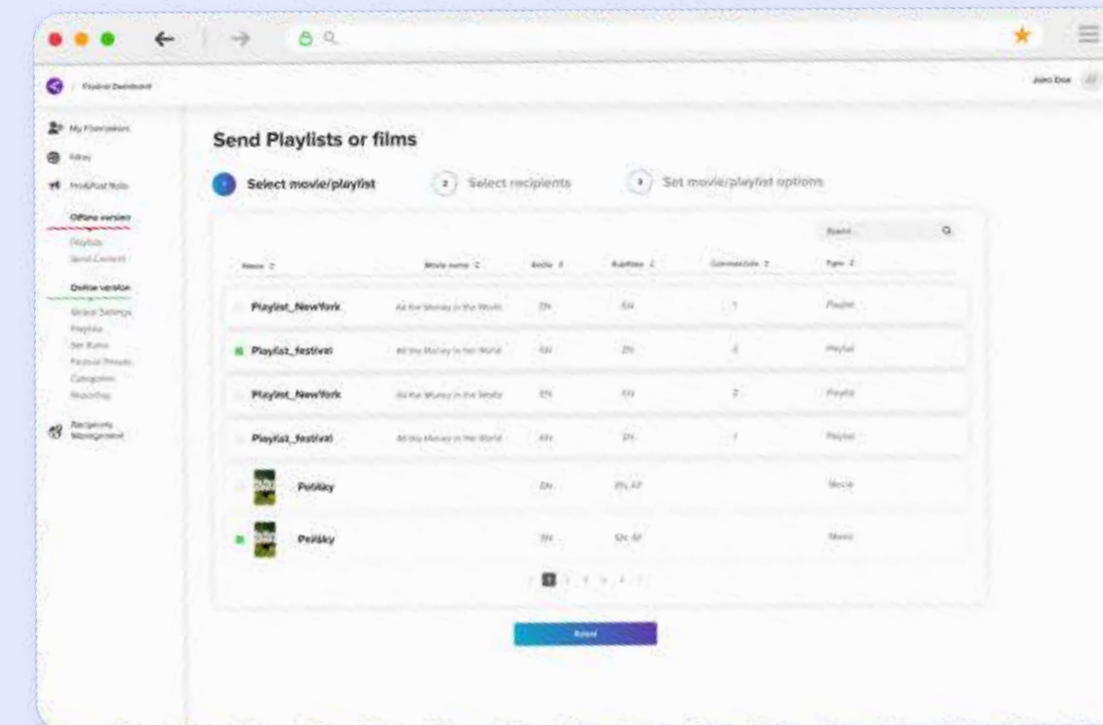


Artinii Pro

Film Distribution Platform

Getting Started



CONTENTS

What do you need to know before you start using the platform?

How do you create your AFDP related website?

How do you „contribute“ a film to the platform?

How do you invite someone so that he can contribute a film?

How do you set up the rules for a film
for Public Screenings and for VOD?

How do you add Pre & Post Rolls into the platform?

What do you need to know before you start using the platform?

1

Any film delivered via Artinii, can for security reasons, only be screened using the **Artinii Cinema Player**. The player is now available for PC and [macOS](#). The VOD solution also works for mobile devices.

3

If you wish to add a film to your AFDP, you or one of your submitters must first upload it to an **Artinii.pro** account.

2

All films must first be uploaded to Artinii.pro

How do I upload a film?
Click [here](#).

4

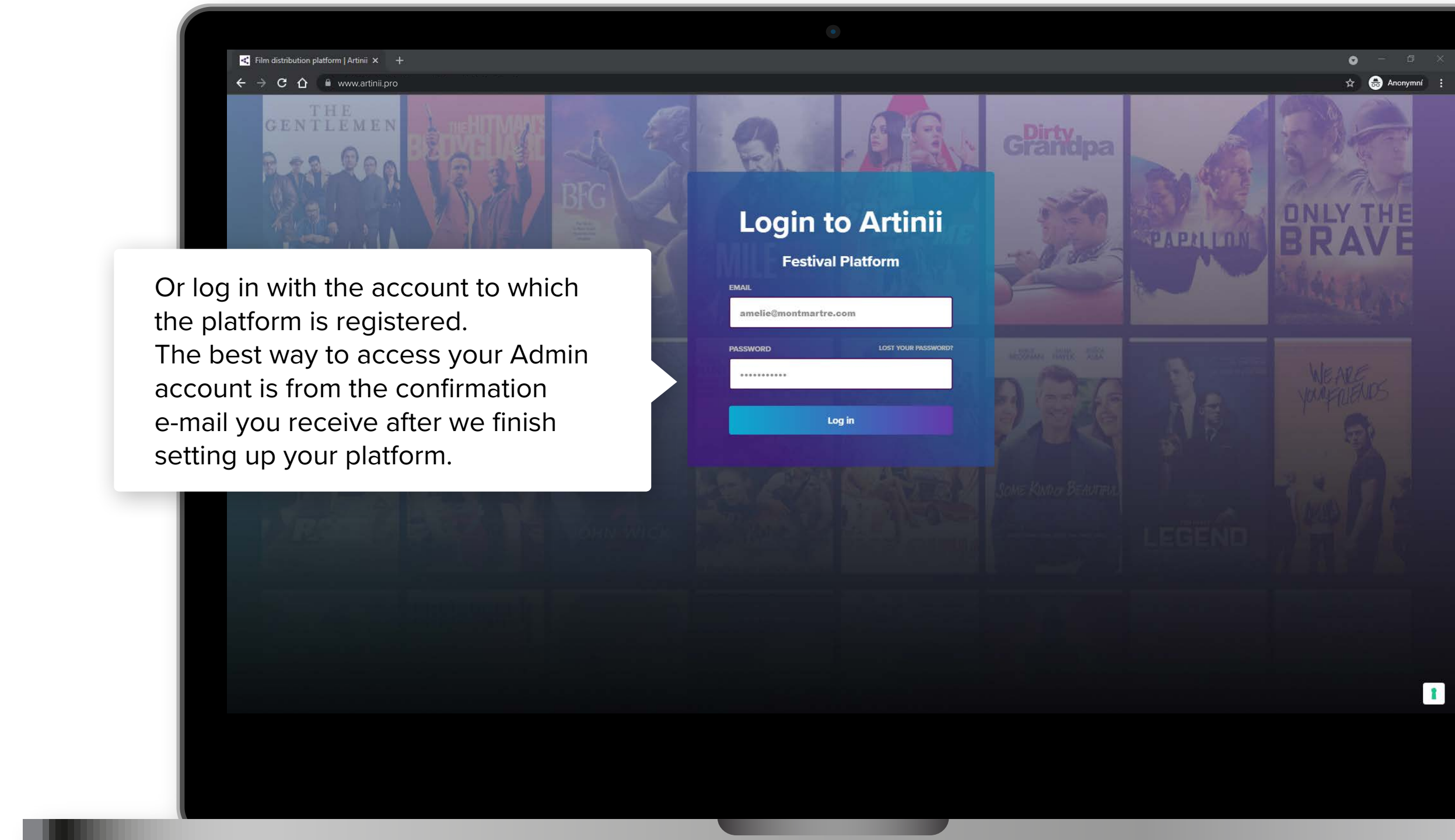
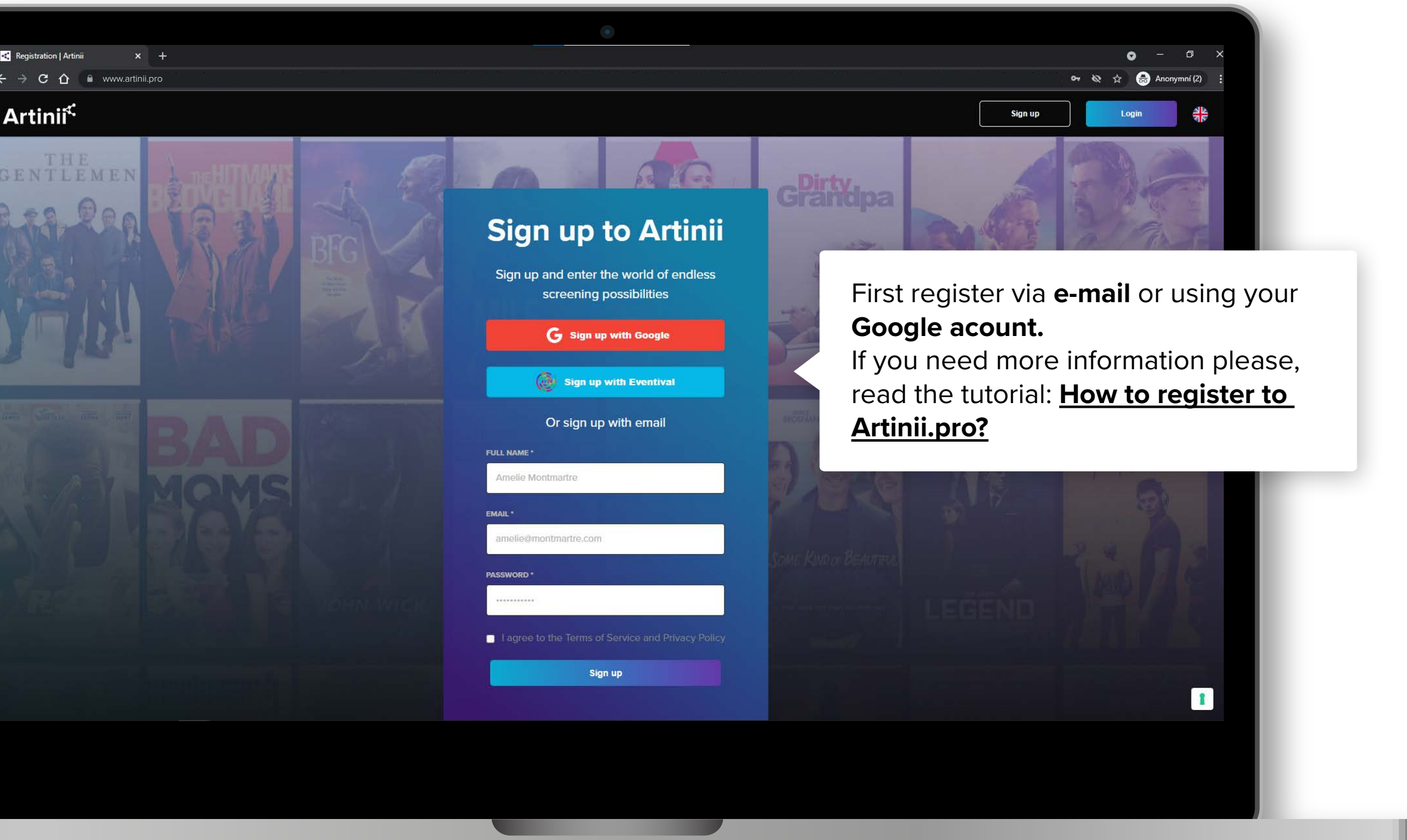
A Submitter can share a film with you only after uploading it to **Artinii.Pro**

Artinii⁺ Pro

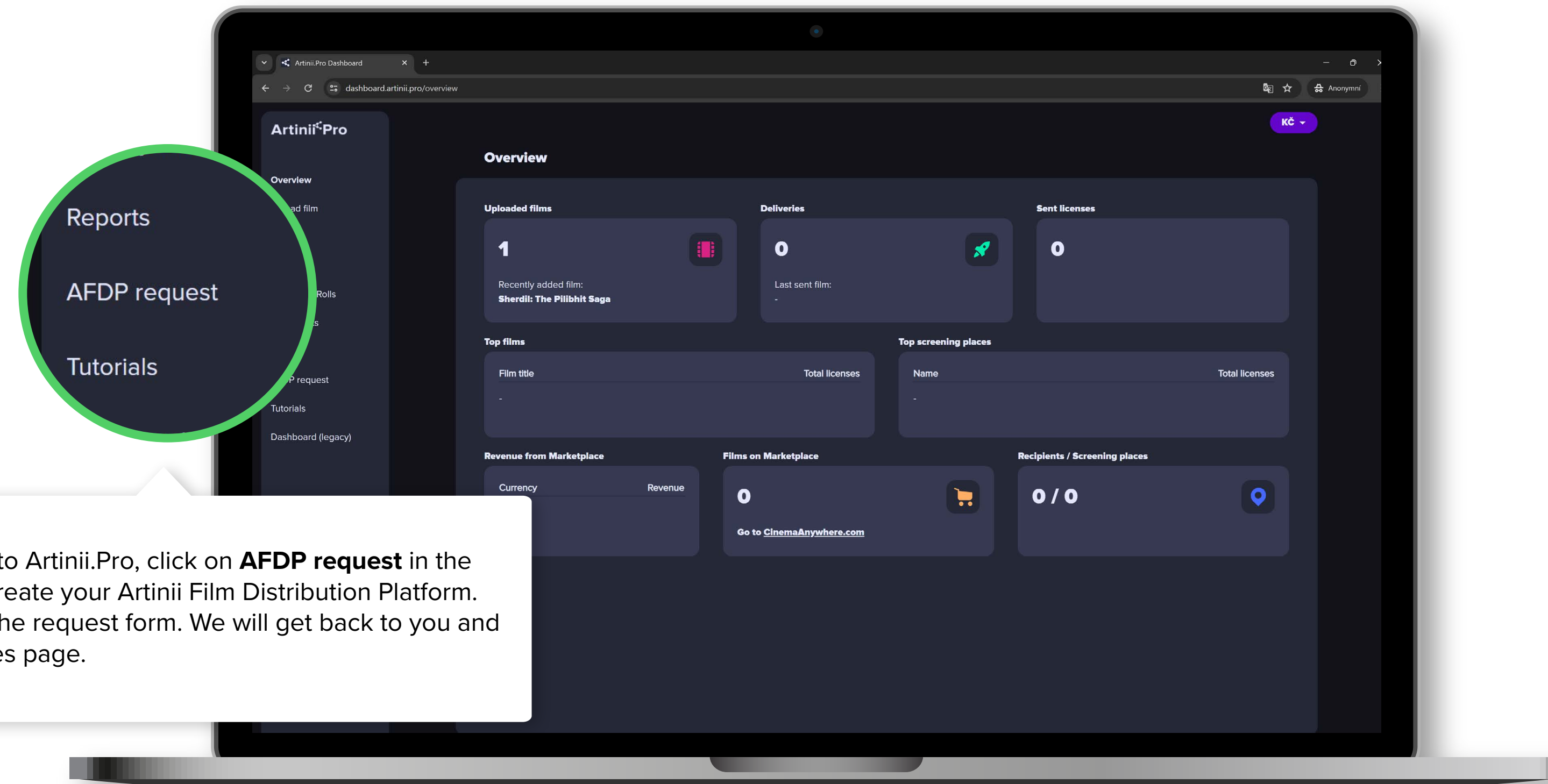
What is **Artinii.pro**?

Artinii.Pro is a one stop shop for all film industry professionals. When it comes to digital film distribution, selling licenses for public screenings, VOD solutions and film festivals, Artinii.Pro hosts all the tools offer all the solutions.

REGISTER OR LOGIN



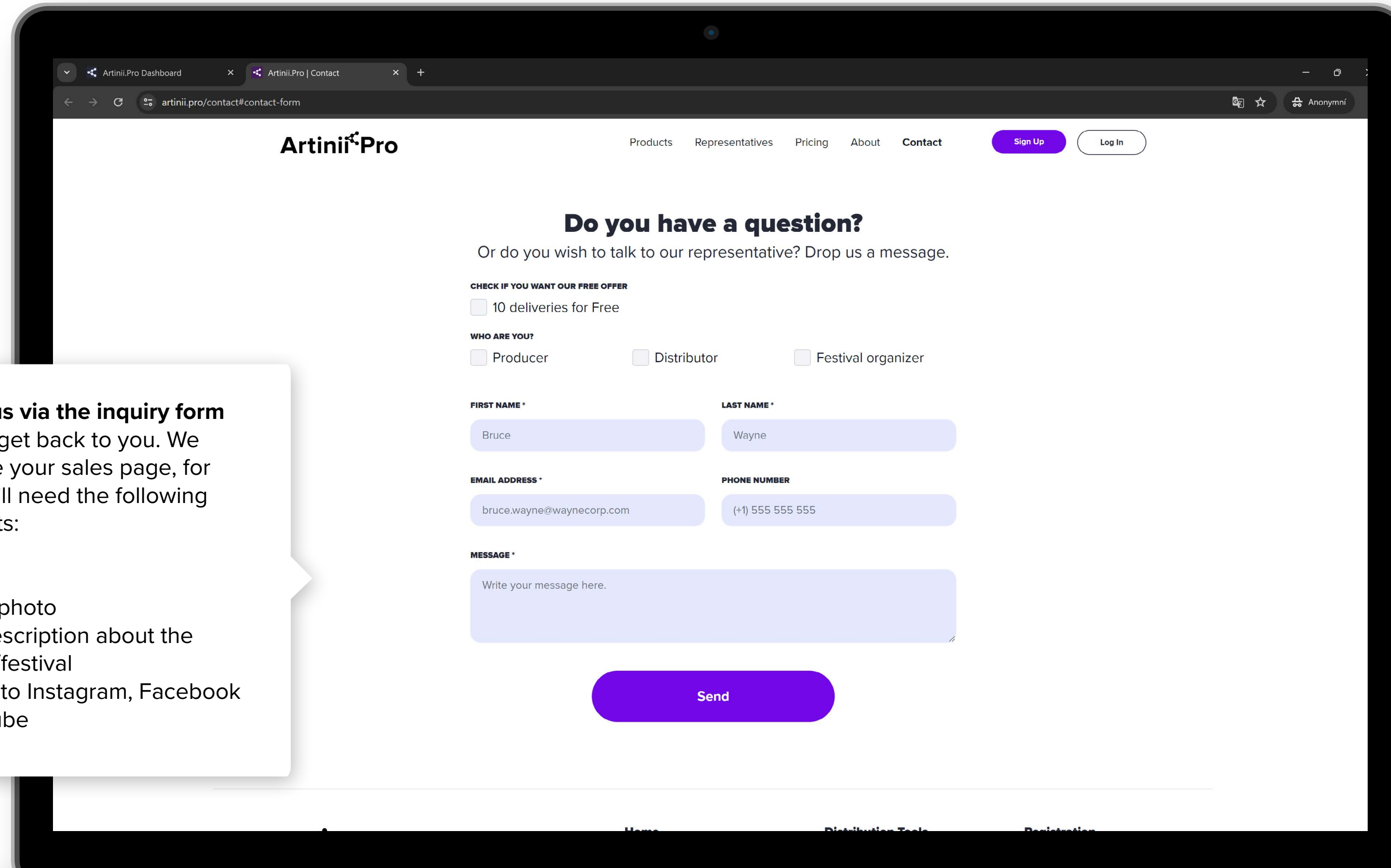
HOW TO CREATE YOUR PUBLIC WEBSITE POWERED BY ARTINII



HOW TO CREATE YOUR AFDP RELATED WEBSITE

• **Write to us via the inquiry form** and we'll get back to you. We will create your sales page, for which we'll need the following documents:

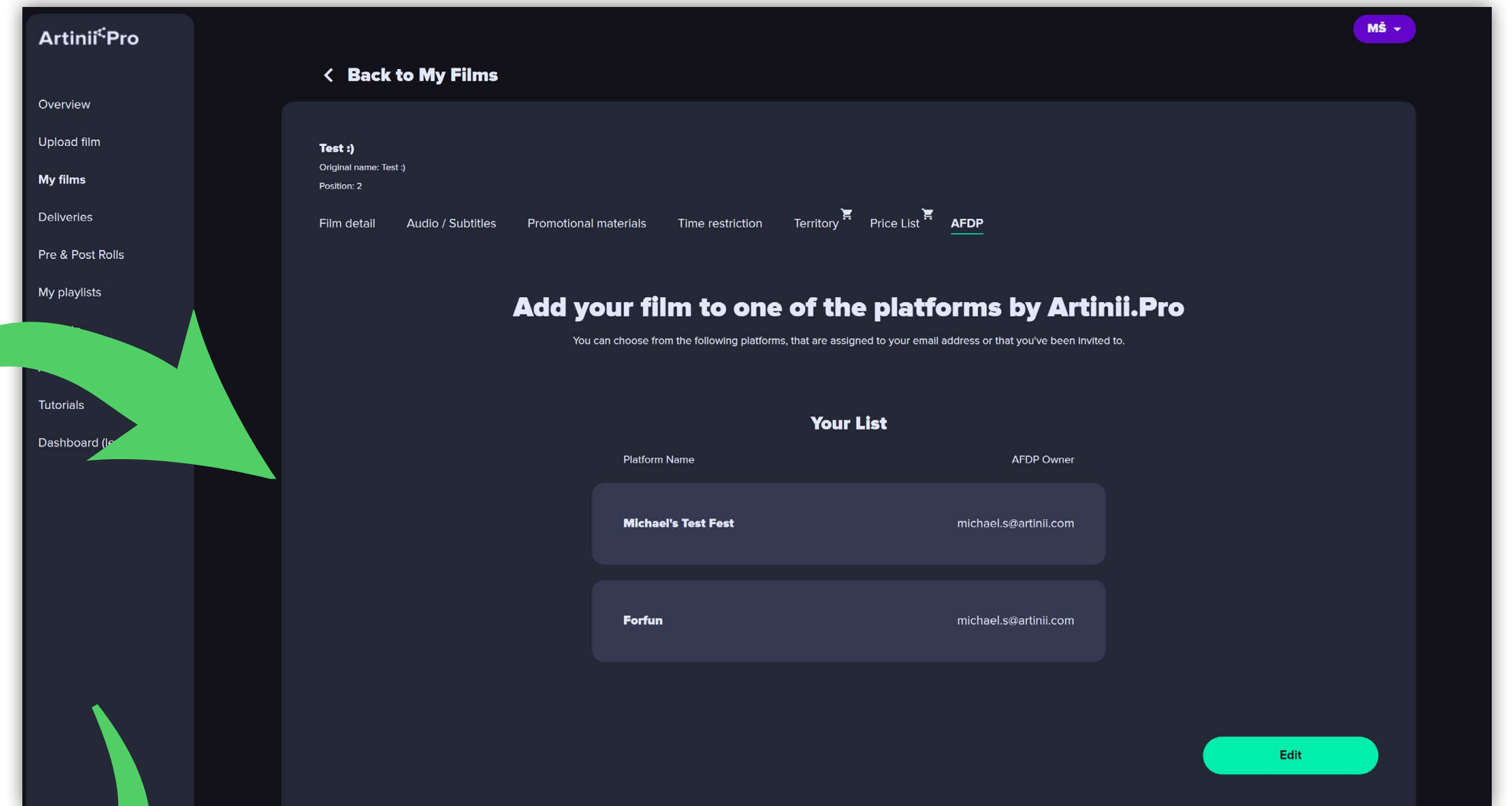
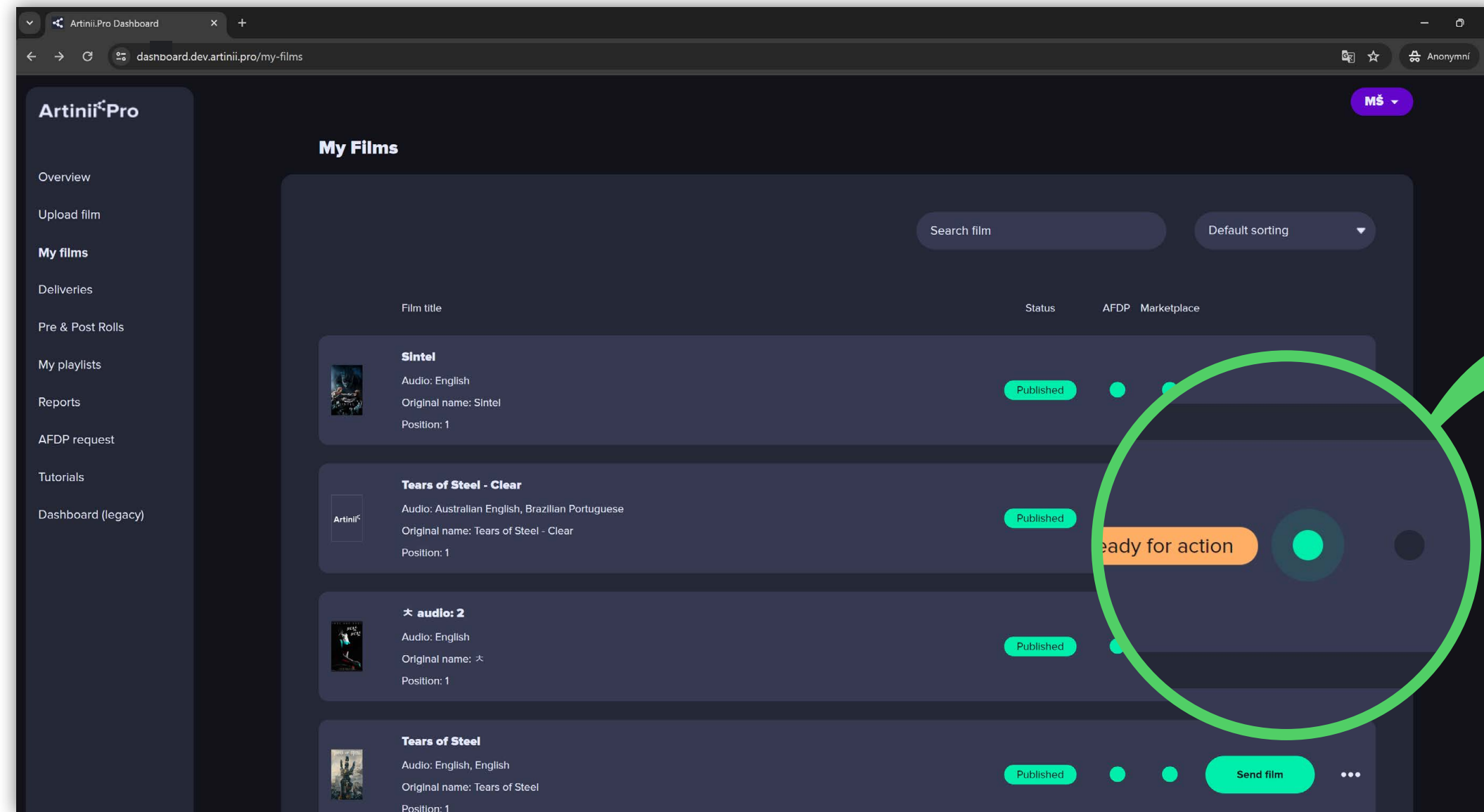
- logo
- a header photo
- a short description about the company/festival
- URL links to Instagram, Facebook and Youtube



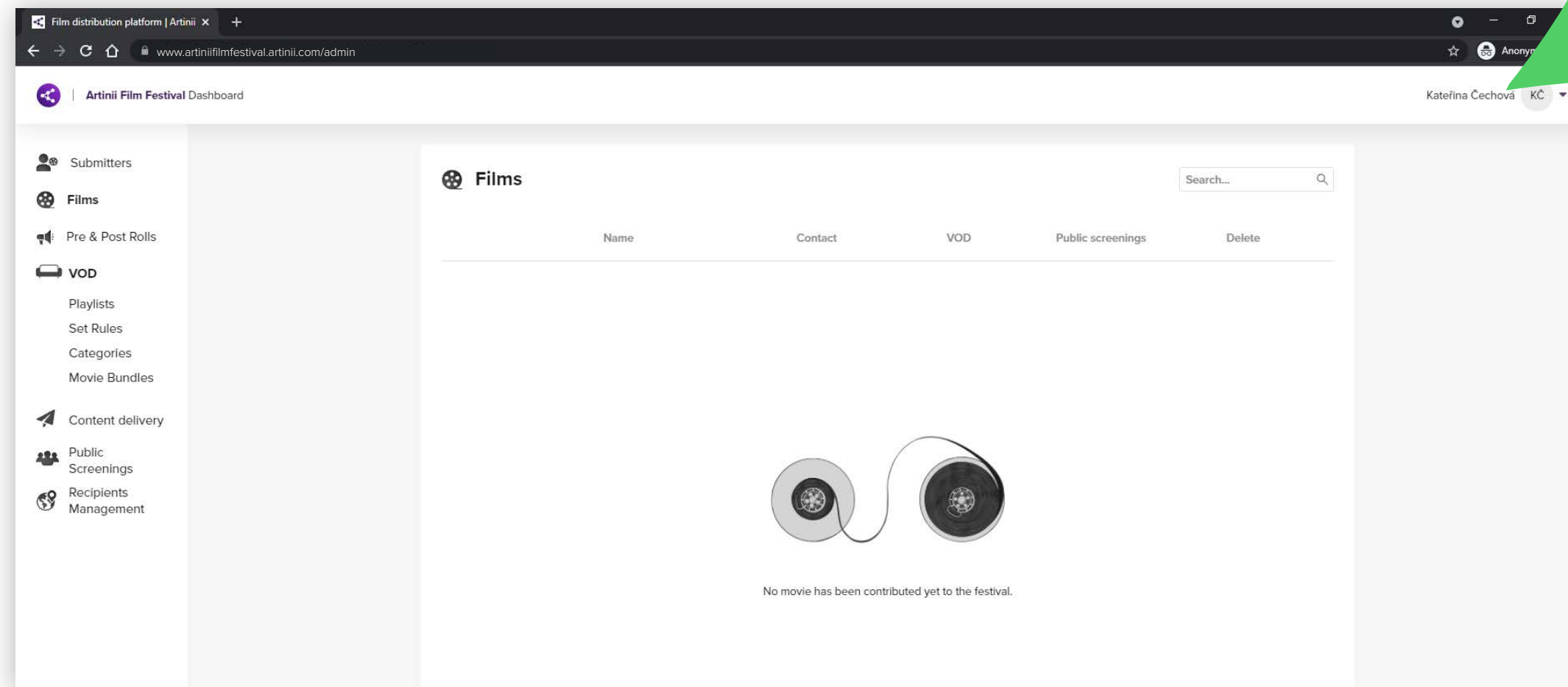
Once we've created your sales page, you can continue with this tutorial.

HOW TO ADD FILMS TO YOUR AFDP

www.artinii.pro/my-films



www.nameofyourplatform.artinii.com/admin



OPTION 1.

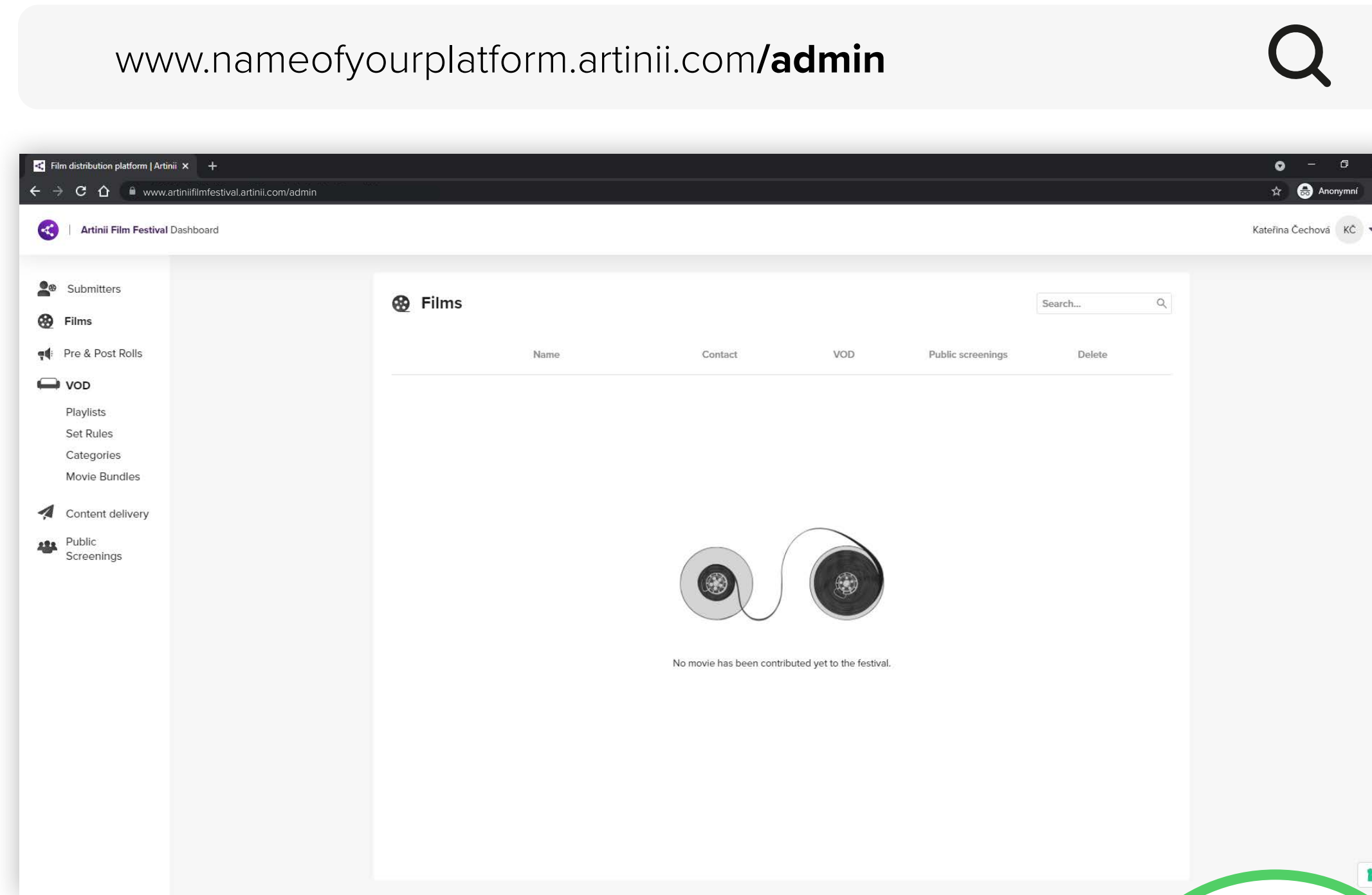
Do you own the films?

First, **log in to Artinii.Pro with the same details as your platform** and upload your movies here.

In order for your films to appear in your Artinii Film Distribution Platform, you must assign them to that platform from **Artinii.Pro** by **clicking the circle in the AFDP column**. Then select your platform and confirm.

[How to upload a film to Artinii.pro?](#) Click here.

HOW TO ADD FILMS TO YOUR AFDP

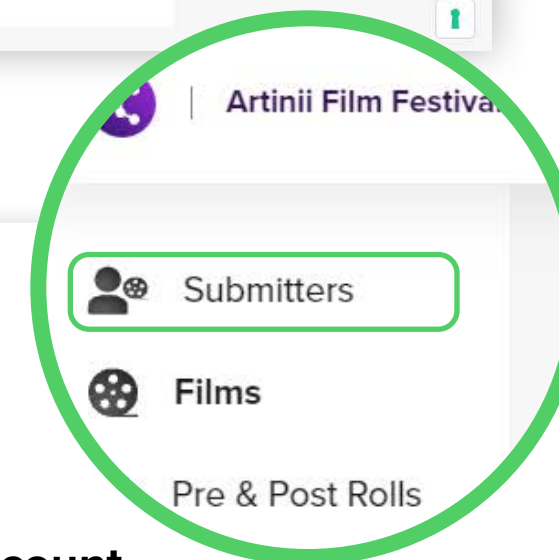


OPTION 2.

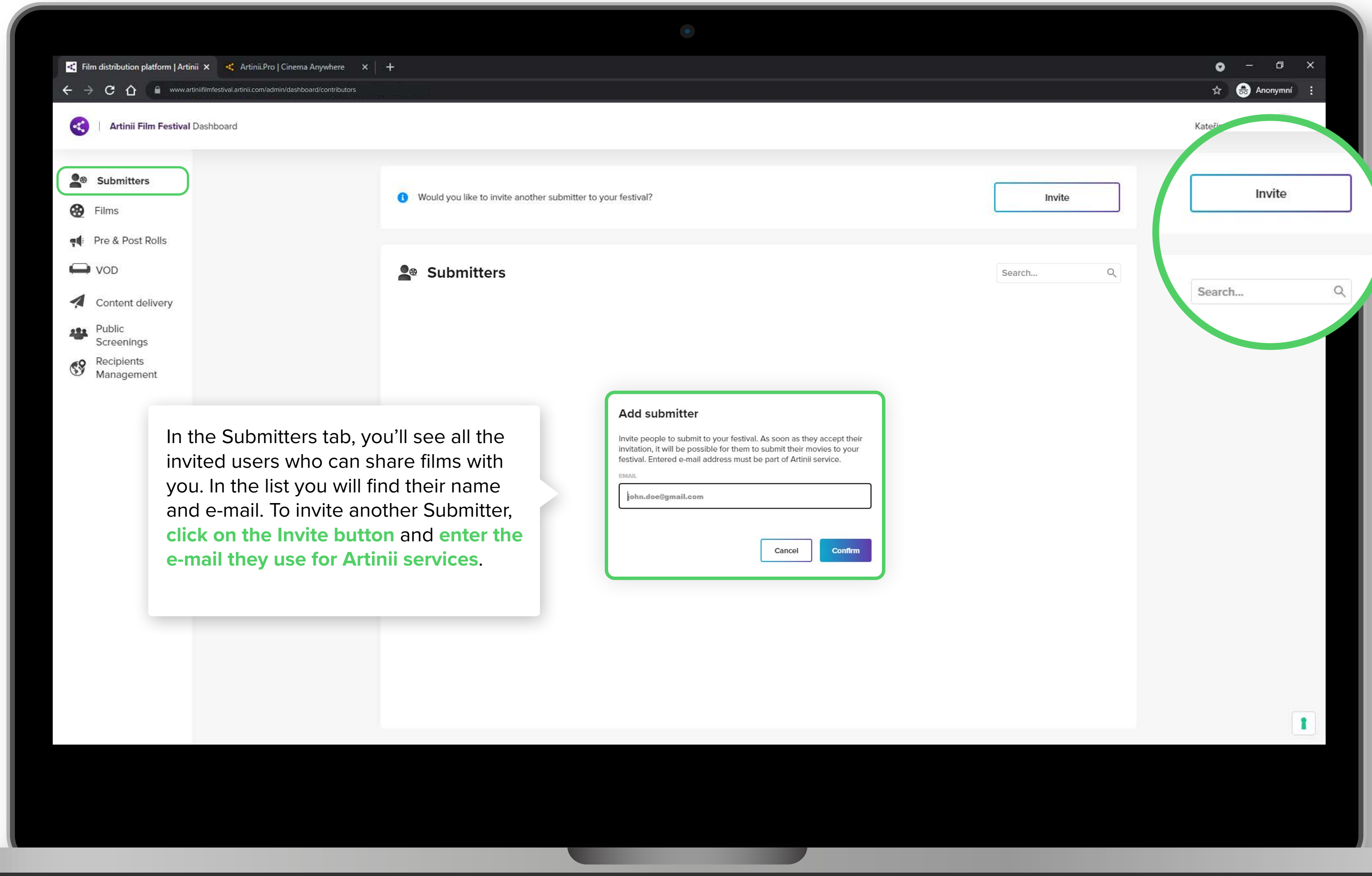
Is someone else the owner of the film?

Films can be assigned to your platform by any other user (submitter) who is registered in the **Artinii system** and **has uploaded a film to their account**. If you want to invite someone to assign a film to your AFDP, **click on Invite and enter the user's e-mail**.

! You will need to enter an e-mail address which is linked to an Artinii.pro account.



HOW TO INVITE SOMEONE TO SUBMIT A FILM TO YOUR AFDP.



HOW DO YOU SET UP THE RULES FOR A FILM FOR PUBLIC SCREENINGS AND FOR VOD?

The screenshot shows the 'Artinii Film Festival Dashboard' with the 'Films' tab selected. The dashboard includes a sidebar with navigation options: Submitters, Films, Pre & Post Rolls, VOD, Content delivery, and Public Screenings. The main content area displays a table of films with columns for Name, Contact, and VOD. The 'VOD' column contains icons for home viewing (a couch) and public screenings (a group of people). A green mouse cursor is shown clicking on the couch icon for 'The Terminator' and the group icon for 'The Internship'. Callout boxes provide instructions on how to set up these options.

Name	Contact	VOD
The Terminator	Kateřina Čechová	
The Mechanic	Kateřina Čechová	
The Deep Water	Kateřina Čechová	
Atomic Blonde	Kateřina Čechová	
Bunny and the Bull	Kateřina Čechová	
The Internship	Kateřina Čechová	
American Pie Presents: The Naked Mile	Kateřina Čechová	

VOD
To sell a film for home viewing, click on the couch icon in the VOD column.

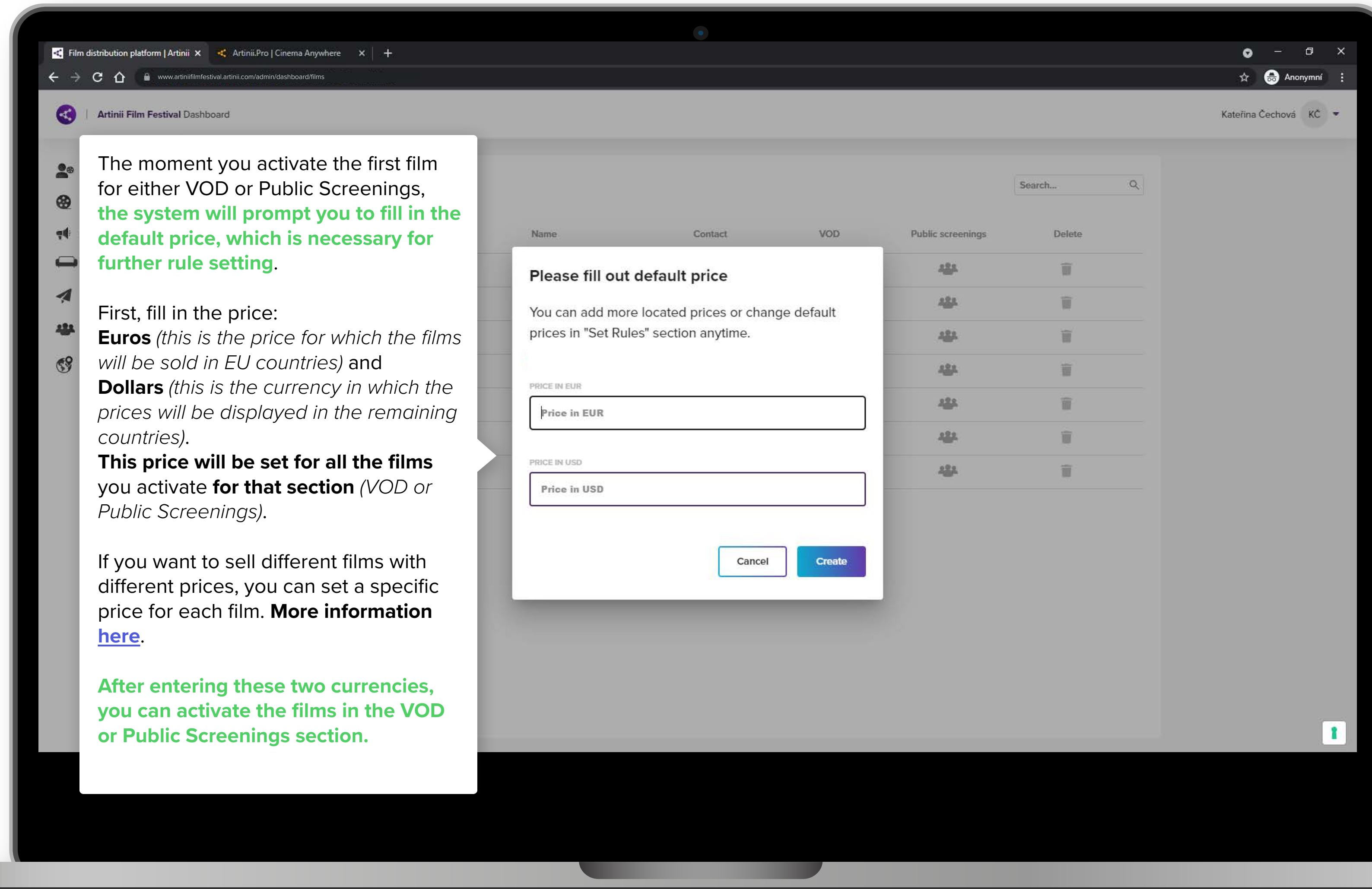
Public Screenings
If you have a film for public screenings, click on the audience icon in the Public screenings column.

All films submitted to your Artinii Film Distribution Platform can be found in the **Films** tab.

Of course, you can sell films for both home and public screenings.

Once the icon turns green, you need to go to the Settings section to set up the details and then start selling your films.

HOW DO YOU SET UP THE RULES FOR A FILM FOR PUBLIC SCREENINGS AND FOR VOD?



HOW DO YOU ADD PRE & POST ROLLS INTO THE PLATFORM?

If you want to add any additional video material (commercials, jingles, spots, etc.) to the films you sell or send, **first upload them** in the **Pre & Post rolls** tab.

You can then insert these accompanying files **into playlists** with individual films. The end user will receive a locked playlist as you defined it.

